

# 2024년 6차 충남대학교 창업보육센터 입주 모집 공실 현황

## 산학연교육연구관



별관 314호 (47.52m<sup>2</sup>)



본관 702호 (56.76m<sup>2</sup>)

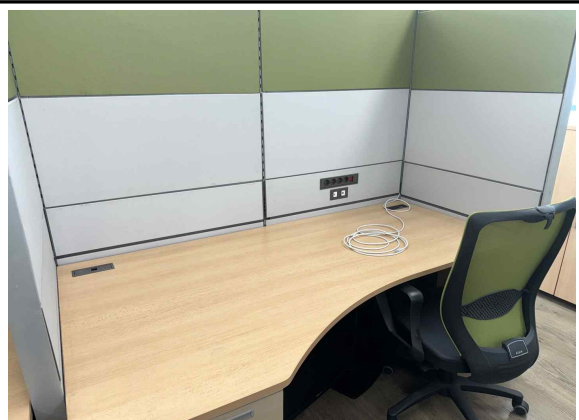
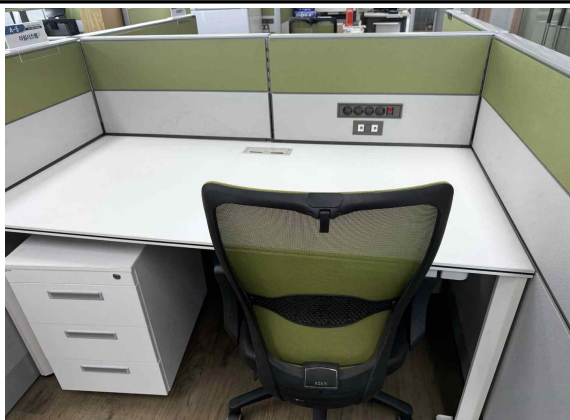


본관 712호 (53.24m<sup>2</sup>)



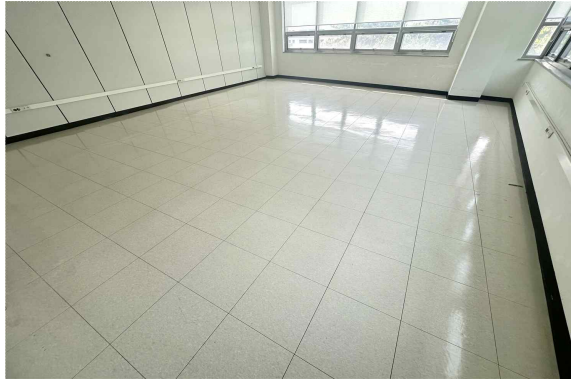
본관 808호 (56.76m<sup>2</sup>)

## 산학연교육연구관



1인창조기업실 (5.6m<sup>2</sup>)

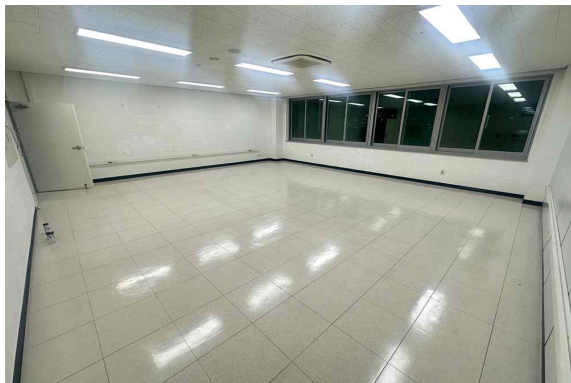
## 산학협력지원센터



201호 (64.89m<sup>2</sup>)



207호 (51.21m<sup>2</sup>)



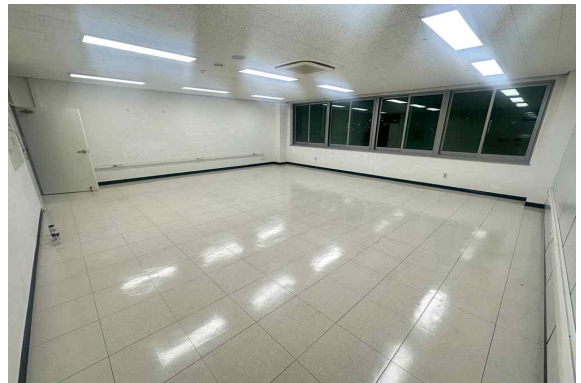
209호 (63.58m<sup>2</sup>)



211호 (62.05m<sup>2</sup>)



306호 (51.21m<sup>2</sup>)



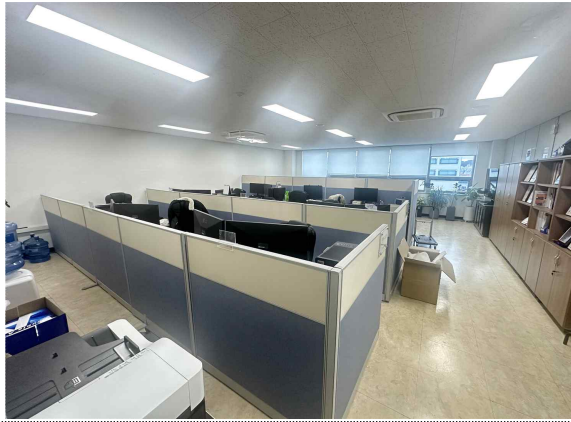
408호 (63.58m<sup>2</sup>)



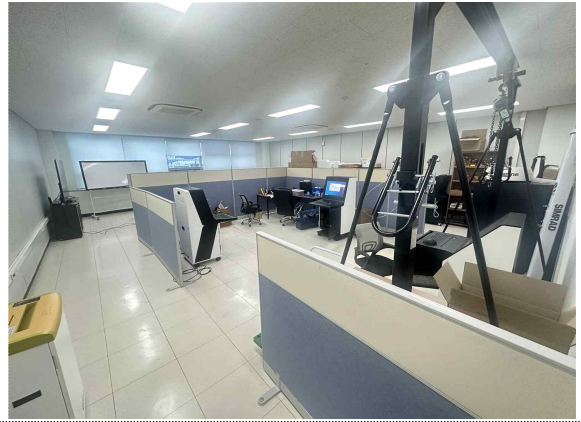
410호 (63.58m<sup>2</sup>)



413호 (99.99m<sup>2</sup>) (24. 11. 30. 퇴거예정)



504호(86.26m<sup>2</sup>)(24. 11. 30. 퇴거예정)



505호(88.59m<sup>2</sup>)(24. 11. 30. 퇴거예정)